



Michigan
Transportation Asset
Management Council

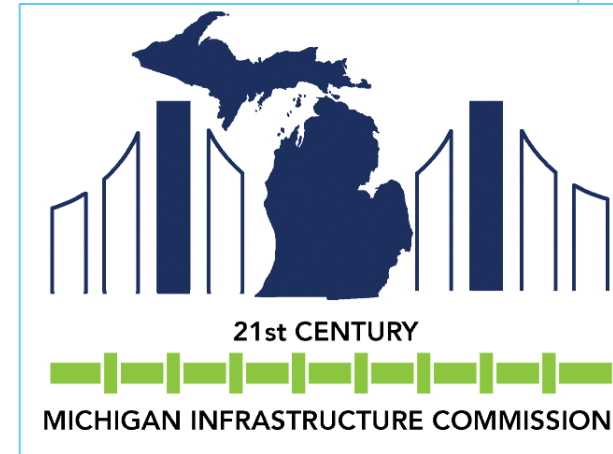


Michigan
Water Asset
Management Council

Building a Strategic
Framework for Michigan's
Integrated Infrastructure
Asset Management

Identifying Opportunity in Challenge

- ▶ 21st Century Infrastructure Commission
 - ▶ Long-term vision and recommendations across transportation, water, energy, and communications
- ▶ Infrastructure Asset Management Pilot
 - ▶ Focused, cross-asset inventory and assessment in 16 West and Southeast Michigan Counties



ASSET
MANAGEMENT
PILOT



Regional Asset Management Pilot

- ▶ Announced April 2017
- ▶ Comprised of three core groups with over 120 members:
 - Advisory Board
 - Stakeholder Team
 - Subject Matter Experts
- ▶ Asset classes included:
 - Drinking Water
 - Storm Water
 - Wastewater
 - Transportation (Culverts)
 - Private Utilities
- ▶ Provided a long-term, comprehensive set of recommendations to the Governor by end of April 2018

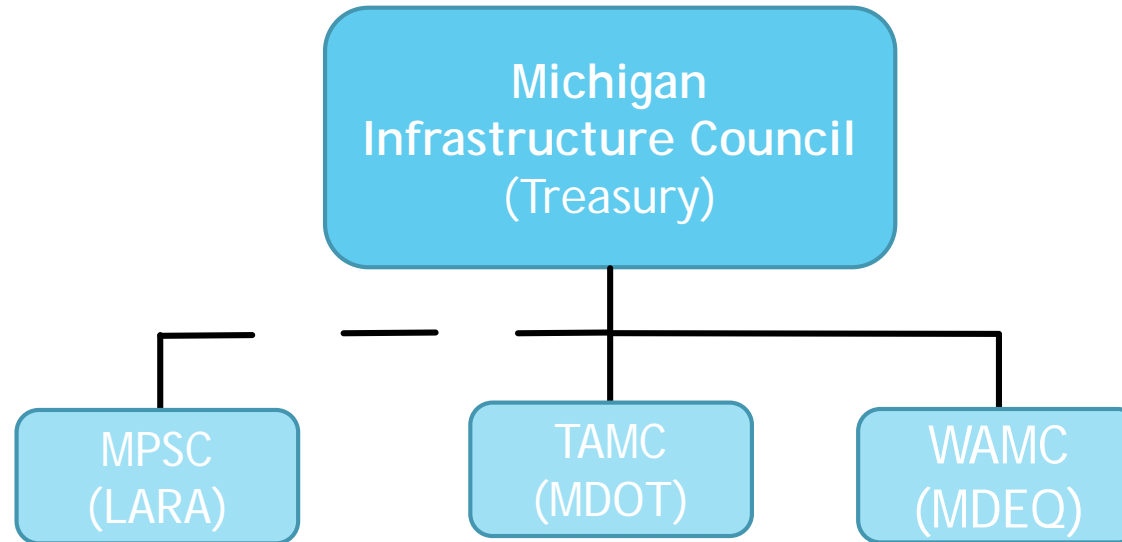


Michigan's Infrastructure Challenges

- ▶ Expansive and Diverse Network
- ▶ Aging and in need of costly repairs/replacements
- ▶ Expensive and temporary "emergency" fixes, instead of proactive maintenance
- ▶ Limited and unsynchronized funding sources
- ▶ Siloed ownership and uncoordinated repair cycles



Building the Foundation for Statewide Integrated Asset Management



- P.A. 323 of 2018 creates the Michigan Infrastructure Council (MIC)
- P.A. 324 of 2018 creates the Water Asset Management Council (WAMC)
- P.A. 325 of 2018 realigns the Transportation Asset Management Council (TAMC) under MIC



The Michigan Infrastructure Council

Define a vision for Michigan's infrastructure that provides the foundation for public and environmental health, economic prosperity and quality of life

MIC Goals and Activities

Working towards a 30-yr Strategy

- ▶ **Educate** - provide accurate and trusted information to support infrastructure decisions
- ▶ **Collaborate** - Facilitate a coordinated, holistic approach that optimizes contributions of all infrastructure managers and users
- ▶ **Coordinate** - Align strategies for infrastructure management; align funding
- ▶ **Prioritize** - Establish and document condition of infrastructure to identify needs for greatest priority.
- ▶ **Invest** - Determine, recommend, and advocate for adequate funding; promote effective and efficient investments to achieve maximum benefit



Water Asset Management Council

Foster and support a statewide culture of asset management focused on the role of water infrastructure in providing public health and optimizing stakeholder value

WAMC Asset Management Template

- ▶ Asset inventory
- ▶ Level of service analysis
- ▶ Risk of failure analysis
- ▶ Anticipated revenues and expenses
- ▶ Performance outcomes analysis
- ▶ Description of plans to coordinate
- ▶ Proof of acceptance by governing body
- ▶ WAMC establish a schedule so 1/3 of asset owners submit annually
- ▶ Owners must **implement** approved plans by October 1, 2024
- ▶ Owner defined as - serves 1000 or more individuals and required to have an asset management *plan* thru a NPDES permit or Safe Drinking Water Act



**Michigan
Infrastructure
Council**



**Michigan
Water Asset
Management Council**



**Michigan
Transportation Asset
Management Council**

Questions

Kelly Green

Infrastructure Coordinator

MDEQ - Lansing

greenk1@Michigan.gov

Michigan.gov/MIC